

6.2 Reading meters

Science inquiry skills

FOUNDATION

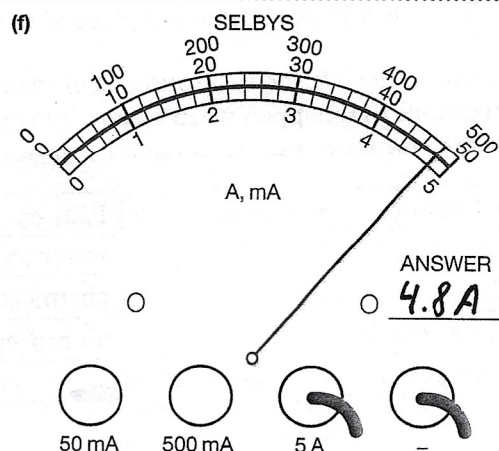
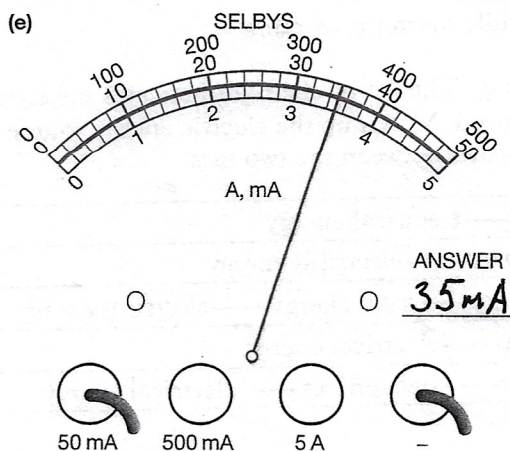
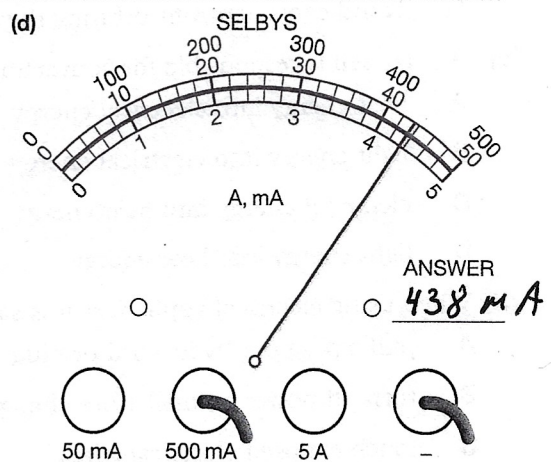
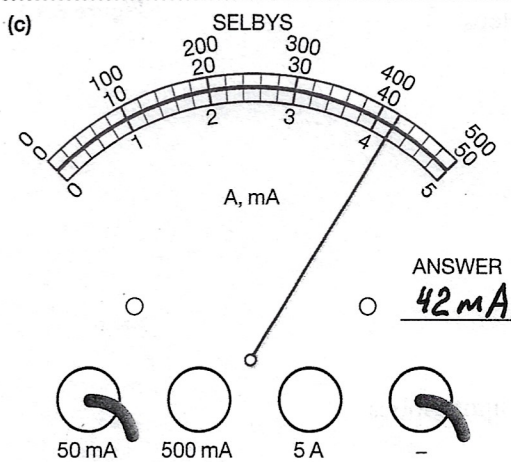
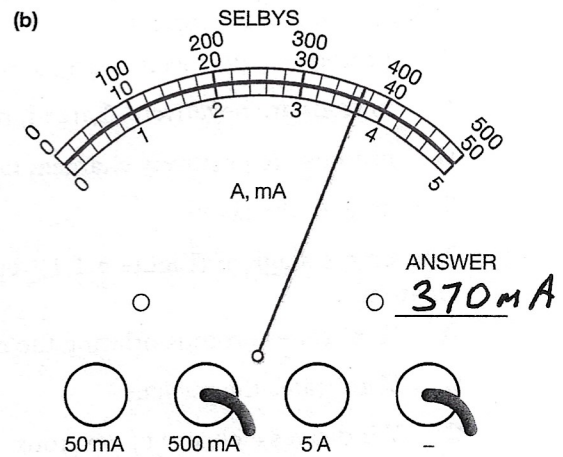
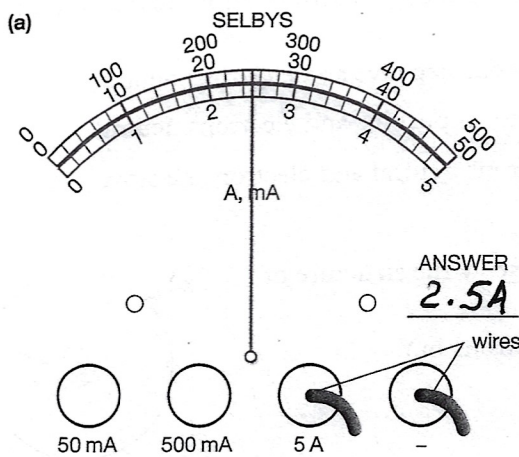
STANDARD

ADVANCED

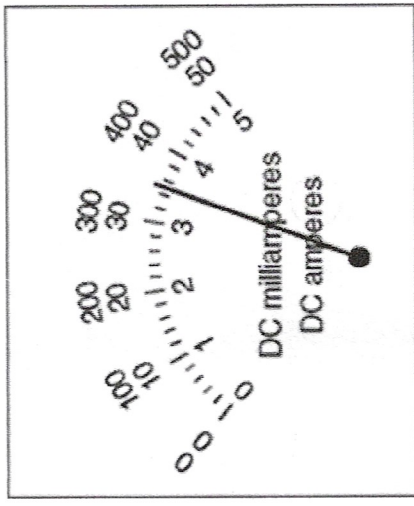
Processing & Analysing

Many ammeters and voltmeters have two or more inputs. The reading that you take depends on what input is being used. The diagrams below show an ammeter that reads in amps (A) or milliamps (mA), depending on which terminal is being used to connect the ammeter to the circuit. For example, if the wires are connected to the 500 mA terminal, you need to read off the 500 mA scale.

- 1 Use this information to determine the voltage reading of each voltmeter shown below.



Scale 5A - 3.5A
Scale 500mA - 350mA
Scale 50mA - 35mA



Scale 3V - 1.4V
Scale 15V - 7V
Scale 30V - 14V

